

© 2009-2011 The Open Group, All Rights Reserved



Audience

- The audience for this presentation is
 - Enterprise architects, business architects, data architects, systems architects, solutions architects and senior managers seeking a first introduction to the new features in TOGAF 9
 - A prior knowledge of TOGAF 8.1.1 is presumed

Slide 3 of 38

TOGAF®

© 2009-2011 The Open Group, All Rights Reserved

Module Objectives

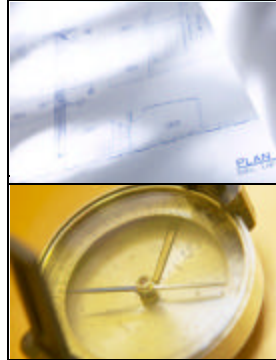
- To understand key differences between TOGAF 8.1.1 and TOGAF 9
 - New features
 - Benefits of the new features
 - Structural changes between TOGAF 8.1.1 and TOGAF 9

Slide 4 of 38

TOGAF®

Agenda

- What is TOGAF ?
- TOGAF 9 Overview
 - Modular Structure
 - Content Framework
 - Extended Guidance
 - Architectural Styles
 - Additional ADM detail



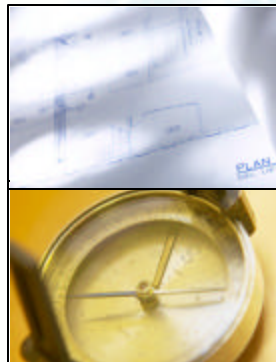
Slide 5 of 38

TOGAF®

© 2009-2011 The Open Group, All Rights Reserved

Agenda

- What is TOGAF?
- TOGAF 9 Overview
 - Modular Structure
 - Content Framework
 - Extended Guidance
 - Architectural Styles
 - Additional ADM detail



Slide 6 of 38

TOGAF®

What is TOGAF?

- The de-facto standard for Enterprise Architecture
- A global standard – developed reviewed and approved by a collaborative of 300 members from many of the world's leading IT customer and vendors
- Based in best practices

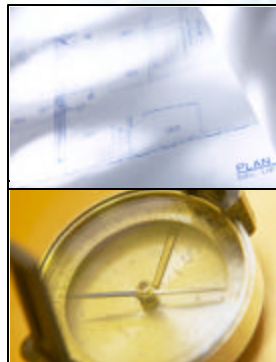
Slide 7 of 38

TOGAF®

© 2009-2011 The Open Group, All Rights Reserved

Agenda

- What is TOGAF?
- TOGAF 9 Overview
 - Modular Structure
 - Content Framework
 - Extended Guidance
 - Architectural Styles
 - Additional ADM detail



Slide 8 of 38

TOGAF®

Key Features/Benefits

- An evolution from TOGAF 8
- Greater Usability
- More Focus on Holistic Enterprise Change
- More Consistency of Output

Slide 9 of 38

TOGAF®

© 2009-2011 The Open Group, All Rights Reserved

An Evolution

- Preserves the existing investment in TOGAF 8.1.1
 - The core method
 - Existing investment in People
 - Knowledge and skills
 - Existing investment in Tools
- Adding further detail and clarification to what has already been proven
- Restructuring for better usability

Slide 10 of 38

TOGAF®

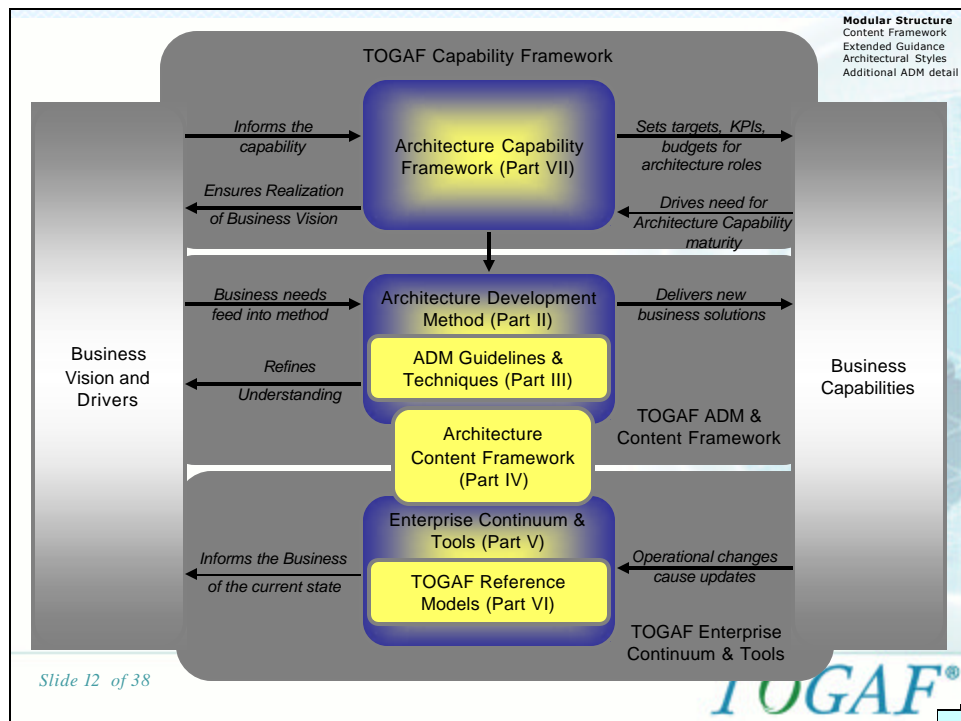
What's New?

- Modular Structure
- Content Framework
- Extended Guidance on using TOGAF
- Explicit Consideration of Architectural Styles
- Further detail added to the Architecture Development Method (ADM)

Slide 11 of 38

TOGAF®

© 2009-2011 The Open Group, All Rights Reserved



Slide 12 of 38

TOGAF®

Modular Structure
 Content Framework
 Extended Guidance
 Architectural Styles
 Additional ADM detail

Modular Structure

- Logically segmented structure
 - See next slides
- Promotes greater usability
- Encourages Incremental adoption
- Supports Evolutionary release management for TOGAF

Slide 13 of 38

© 2009-2011 The Open Group, All Rights Reserved

Modular Structure
 Content Framework
 Extended Guidance
 Architectural Styles
 Additional ADM detail

Table of Contents

Part I - Introduction	Based on 8.1.1 Content with new material added
Preface, Executive Overview, Core Concepts, Definitions and Release Notes	
Part II - Architecture Development Method	The essence of 8.1.1 retained plus more detail
Introduction to ADM ADM Phase Narratives	
Part III - ADM Guidelines and Techniques	Derived from 8.1.1 with new materials
Guidelines for Adapting the ADM Process Techniques for Architecture Development	
Part IV - Architecture Content Framework	New for TOGAF 9
Content Metamodel	
Architectural Artifacts	
Architecture Deliverables Building Blocks	
Part V - Enterprise Continuum and Tools	Substantively Revised
Enterprise Continuum	
Architecture Partitioning	
Architecture Repository Tools for Architecture Development	
Part VI - Reference Models	Derived from 8.1.1 Enterprise Continuum
Foundation Architecture: Technical Reference Model Integrated Information Infrastructure Reference Model	
Part VII - Architecture Capability Framework	Derived from 8.1.1 Resource Base
Architecture Board	
Architecture Compliance	
Architecture Contracts	
Architecture Governance	
Architecture Maturity Models Architecture Skills Framework	

Slide 14 of 38

Modular Structure
 Content Framework
 Extended Guidance
 Architectural Styles
 Additional ADM detail

Part I: Introduction

Part I - Introduction
Preface, Executive Overview, Core Concepts, Definitions and Release Notes
Part II - Architecture Development Method
Introduction to ADM
ADM Phase Narratives
Part III - ADM Guidelines and Techniques
Guidelines for Adapting the ADM Process
Techniques for Architecture Development
Part IV - Architecture Content Framework
Content Metamodel
Architectural Artifacts
Architecture Deliverables
Building Blocks
Part V - Enterprise Continuum and Tools
Enterprise Continuum
Architecture Partitioning
Architecture Repository
Tools for Architecture Development
Part VI - Reference Models
Foundation Architecture: Technical Reference Model
Integrated Information Infrastructure Reference Model
Part VII - Architecture Capability Framework
Architecture Board
Architecture Compliance
Architecture Contracts
Architecture Governance
Architecture Maturity Models
Architecture Skills Framework

- Based on TOGAF 8.1.1 but reflecting the content of TOGAF 9, with additional enhancements
- Includes new “Core Concepts”
- Includes formal “Definitions”
- Includes release notes

Slide 15 of 38

© 2009-2011 The Open Group, All Rights Reserved

Modular Structure
 Content Framework
 Extended Guidance
 Architectural Styles
 Additional ADM detail

Part II: Architecture Development Method

Part I - Introduction
Preface, Executive Overview, Core Concepts, Definitions and Release Notes
Part II - Architecture Development Method
Introduction to ADM
ADM Phase Narratives
Part III - ADM Guidelines and Techniques
Guidelines for Adapting the ADM Process
Techniques for Architecture Development
Part IV - Architecture Content Framework
Content Metamodel
Architectural Artifacts
Architecture Deliverables
Building Blocks
Part V - Enterprise Continuum and Tools
Enterprise Continuum
Architecture Partitioning
Architecture Repository
Tools for Architecture Development
Part VI - Reference Models
Foundation Architecture: Technical Reference Model
Integrated Information Infrastructure Reference Model
Part VII - Architecture Capability Framework
Architecture Board
Architecture Compliance
Architecture Contracts
Architecture Governance
Architecture Maturity Models
Architecture Skills Framework

- The core of TOGAF
- The essence of the TOGAF 8.1.1 ADM is retained in TOGAF 9 with the familiar “crop circle” and structure
- The TOGAF ADM Phase Inputs and Outputs chapter has been moved to Part IV: Architecture Content Framework
- Additional content is added to each ADM Phase

Slide 16 of 38

Part III: ADM Guidelines & Techniques

Modular Structure
Content Framework
Extended Guidance
Architectural Styles
Additional ADM detail

Part I - Introduction
Preface, Executive Overview, Core Concepts, Definitions and Release Notes
Part II - Architecture Development Method
Introduction to ADM
ADM Phase Narratives
Part III - ADM Guidelines & Techniques
Guidelines for Adapting the ADM Process
Techniques for Architecture Development
Part IV - Architecture Content Framework
Content Metamodel
Architectural Artifacts
Architecture Deliverables
Building Blocks
Part V - Enterprise Continuum & Tools
Enterprise Continuum
Architecture Partitioning
Architecture Repository
Tools for Architecture Development
Part VI - Reference Models
Foundation Architecture: Technical Reference Model
Integrated Information Infrastructure Reference Model
Part VII - Architecture Capability Framework
Architecture Board
Architecture Compliance
Architecture Contracts
Architecture Governance
Architecture Maturity Models
Architecture Skills Framework

- A collection of guidelines and techniques for use in applying TOGAF and the ADM
- Derived from the 8.1.1 Resource Base in part, plus additional new materials:
e.g., Iteration, Stakeholder Management, SOA, Risk management, Capability based planning, Business Transformation Readiness Assessment, ADM support techniques, etc

Slide 17 of 38

TOGAF®

© 2009-2011 The Open Group, All Rights Reserved

Part IV: Architecture Content Framework

Modular Structure
Content Framework
Extended Guidance
Architectural Styles
Additional ADM detail

Part I - Introduction
Preface, Executive Overview, Core Concepts, Definitions and Release Notes
Part II - Architecture Development Method
Introduction to ADM
ADM Phase Narratives
Part III - ADM Guidelines and Techniques
Guidelines for Adapting the ADM Process
Techniques for Architecture Development
Part IV - Architecture Content Framework
Content Metamodel
Architectural Artifacts
Architecture Deliverables
Building Blocks
Part V - Enterprise Continuum and Tools
Enterprise Continuum
Architecture Partitioning
Architecture Repository
Tools for Architecture Development
Part VI - Reference Models
Foundation Architecture: Technical Reference Model
Integrated Information Infrastructure Reference Model
Part VII - Architecture Capability Framework
Architecture Board
Architecture Compliance
Architecture Contracts
Architecture Governance
Architecture Maturity Models
Architecture Skills Framework

- New for TOGAF 9
- This part describes the TOGAF Content Framework, describing:
 - a structured metamodel for architectural artifacts,
 - use of architecture building blocks
 - an overview of typical architecture deliverables

Slide 18 of 38

TOGAF®

Modular Structure
 Content Framework
 Extended Guidance
 Architectural Styles
 Additional ADM detail

Part V: Enterprise Continuum & Tools

Part I - Introduction
Preface, Executive Overview, Core Concepts, Definitions and Release Notes
Part II - Architecture Development Method
Introduction to ADM
ADM Phase Narratives
Part III - ADM Guidelines and Techniques
Guidelines for Adapting the ADM Process
Techniques for Architecture Development
Part IV - Architecture Content Framework
Content Metamodel
Architectural Artifacts
Architecture Deliverables
Building Blocks
Part V - Enterprise Continuum and Tools
Enterprise Continuum
Architecture Partitioning
Architecture Repository
Tools for Architecture Development
Part VI - Reference Models
Foundation Architecture: Technical Reference Model
Integrated Information Infrastructure Reference Model
Part VII - Architecture Capability Framework
Architecture Board
Architecture Compliance
Architecture Contracts
Architecture Governance
Architecture Maturity Models
Architecture Skills Framework

- Substantially revised
- The reference models are moved to Part VI
- New content added on Architecture Partitioning and the Architecture Repository
- The SIB is removed

Slide 19 of 38

© 2009-2011 The Open Group, All Rights Reserved

Modular Structure
 Content Framework
 Extended Guidance
 Architectural Styles
 Additional ADM detail

Part VI: Reference Models

Part I - Introduction
Preface, Executive Overview, Core Concepts, Definitions and Release Notes
Part II - Architecture Development Method
Introduction to ADM
ADM Phase Narratives
Part III - ADM Guidelines and Techniques
Guidelines for Adapting the ADM Process
Techniques for Architecture Development
Part IV - Architecture Content Framework
Content Metamodel
Architectural Artifacts
Architecture Deliverables
Building Blocks
Part V - Enterprise Continuum and Tools
Enterprise Continuum
Architecture Partitioning
Architecture Repository
Tools for Architecture Development
Part VI - Reference Models
Foundation Architecture: Technical Reference Model
Integrated Information Infrastructure Reference Model
Part VII - Architecture Capability Framework
Architecture Board
Architecture Compliance
Architecture Contracts
Architecture Governance
Architecture Maturity Models
Architecture Skills Framework

- Substantially revised
- The Reference models from TOGAF 8.1.1 have been moved to their own Part
- The TRM is now contained in a single chapter

Slide 20 of 38

Modular Structure
 Content Framework
 Extended Guidance
 Architectural Styles
 Additional ADM detail

Part VII: Architecture Capability Framework

Part I - Introduction
Preface, Executive Overview, Core Concepts, Definitions and Release Notes
Part II - Architecture Development Method
Introduction to ADM
ADM Phase Narratives
Part III - ADM Guidelines and Techniques
Guidelines for Adapting the ADM Process
Techniques for Architecture Development
Part IV - Architecture Content Framework
Content Metamodel
Architectural Artifacts
Architecture Deliverables
Building Blocks
Part V - Enterprise Continuum and Tools
Enterprise Continuum
Architecture Partitioning
Architecture Repository
Tools for Architecture Development
Part VI - Reference Models
Foundation Architecture: Technical Reference Model
Integrated Information Infrastructure Reference Model
Part VII - Architecture Capability Framework
Architecture Board
Architecture Compliance
Architecture Contracts
Architecture Governance
Architecture Maturity Models
Architecture Skills Framework

- A new part in TOGAF 9, derived from the 8.1.1 Resource Base
- Describes the organization, processes, skills, roles and responsibilities to establish and operate an architecture function

Slide 21 of 38

© 2009-2011 The Open Group, All Rights Reserved

Modular Structure
Content Framework
 Extended Guidance
 Architectural Styles
 Additional ADM detail

Content Framework

- A significant addition to TOGAF
- It provides a detailed model of architectural work products
- It drives for greater consistency in the outputs of TOGAF

Slide 22 of 38

Benefits of the Content Framework

Modular Structure
Content Framework
Extended Guidance
Architectural Styles
Additional ADM detail

- It provides a comprehensive checklist of architecture outputs
- It promotes better integration of work products if adopted across an enterprise
- It provides a detailed open standard for how architectures should be described

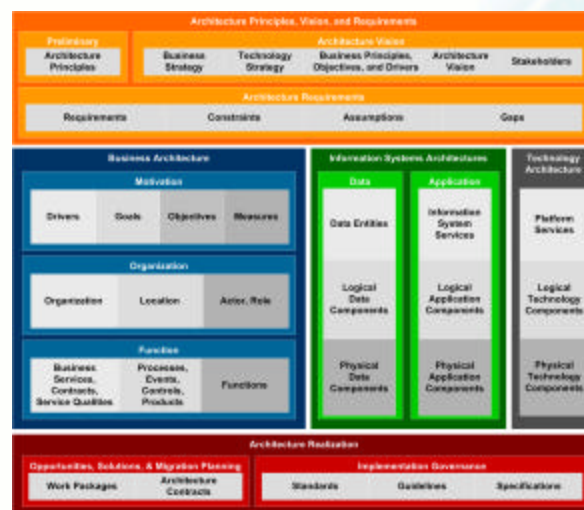
Slide 23 of 38

TOGAF®

© 2009-2011 The Open Group, All Rights Reserved

Content Metamodel

Modular Structure
Content Framework
Extended Guidance
Architectural Styles
Additional ADM detail



Slide 24 of 38

TOGAF®

Modular Structure
Content Framework
Extended Guidance
Architectural Styles
Additional ADM detail

Content Metamodel

- Building blocks continue to be the basic elements of the architecture within TOGAF
- The content framework provides a structured model of building block types, relationships and attributes
- The content framework can be used informally, or as the basis for configuration of an Enterprise Architecture modelling tool
- The content framework features a core and extension concept, with optional building block types, in order to support lightweight and detailed architectures

Slide 25 of 38

TOGAF®

© 2009-2011 The Open Group, All Rights Reserved

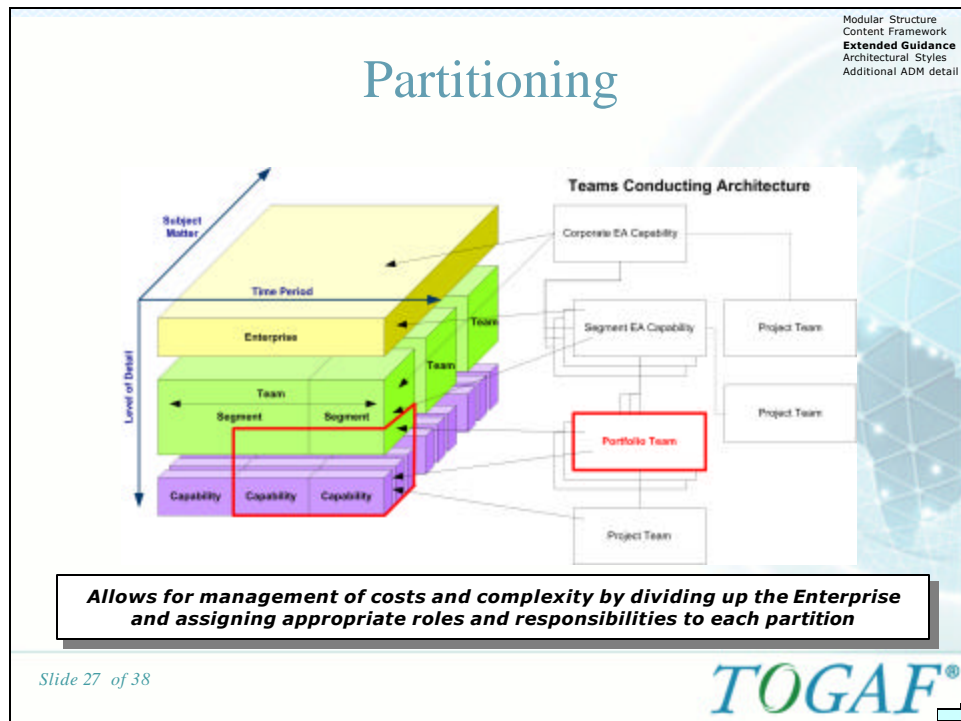
Modular Structure
Content Framework
Extended Guidance
Architectural Styles
Additional ADM detail

Extended Guidance on Using TOGAF

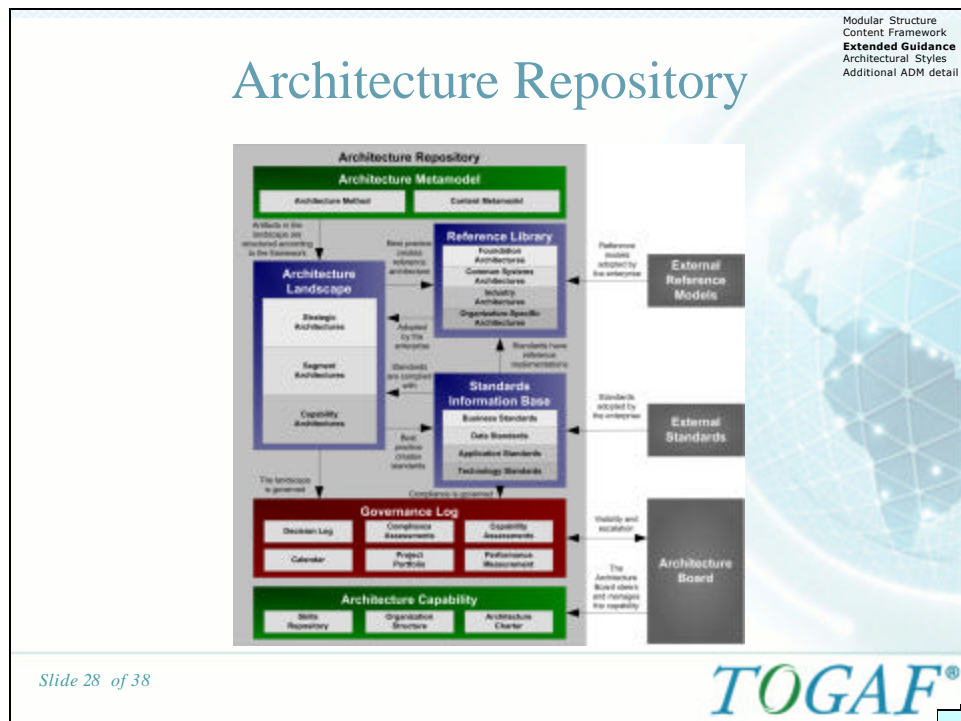
- TOGAF 9 features an extended set of concepts and guidelines for using TOGAF
- Concepts introduced to support an integrated hierarchy of architectures being developed

Slide 26 of 38

TOGAF®



© 2009-2011 The Open Group, All Rights Reserved



Modular Structure
Content Framework
Extended Guidance
Architectural Styles
Additional ADM detail

Architecture Repository

- The Architecture Repository is a logical information store for outputs of executing the ADM:
 - The **Architecture Metamodel** describes the architecture framework in use within the Enterprise
 - The **Architecture Landscape** shows the state of the operating Enterprise at particular points in time
 - The **Reference Library** contains re-usable architecture work products
 - The **Standards Information Base** defines the compliance criteria for work governed by architecture
 - The **Governance Log** captures results of governance activity, such as compliance assessments
 - The **Architecture Capability** describes the organisation, roles, skills and responsibilities of the Enterprise Architecture practice

TOGAF®

Slide 29 of 38

© 2009-2011 The Open Group, All Rights Reserved

Modular Structure
Content Framework
Extended Guidance
Architectural Styles
Additional ADM detail

Capability Framework

The diagram illustrates the Capability Framework, showing the relationship between various components:

- Governance Bodies** (top) oversees the framework.
- Skilled Resource Pool** (left) includes **Training**, **Skills**, **Knowledge**, and **Architecture Professionals**. Training improves skills and knowledge. Skills and knowledge are possessed by architecture professionals. Roles and responsibilities are required by skills and knowledge.
- Roles and Responsibilities** (center) are specific to a particular project.
- Project / Portfolio Governance** (right) includes **Contract** and **Projects / Portfolios**. Governance involves setting priorities and focus, reviewing success, and ensuring alignment with business operations.
- Business Operations** (far right) are the core of the enterprise.
- Enterprise Continuum** (bottom) is used to classify inputs to and outputs from the repository.
- Architecture Repository** (bottom) is the central information store.

TOGAF®

Slide 30 of 38

Modular Structure
Content Framework
Extended Guidance
Architectural Styles
Additional ADM detail

Capability Framework

- A structured definition of the organizations, skills, roles and responsibilities to establish and operate an Enterprise Architecture, including:
 - Terms of Reference for an **Architecture Board**
 - Guidance on measuring levels of **Architecture Compliance** against **Architecture contracts**
 - Processes and organization structures required to operate **Architecture Governance**
 - Techniques for assessing **Architecture Maturity**
 - An overview of the **Skills** required by practicing architects

Slide 31 of 38

TOGAF®

© 2009-2011 The Open Group, All Rights Reserved

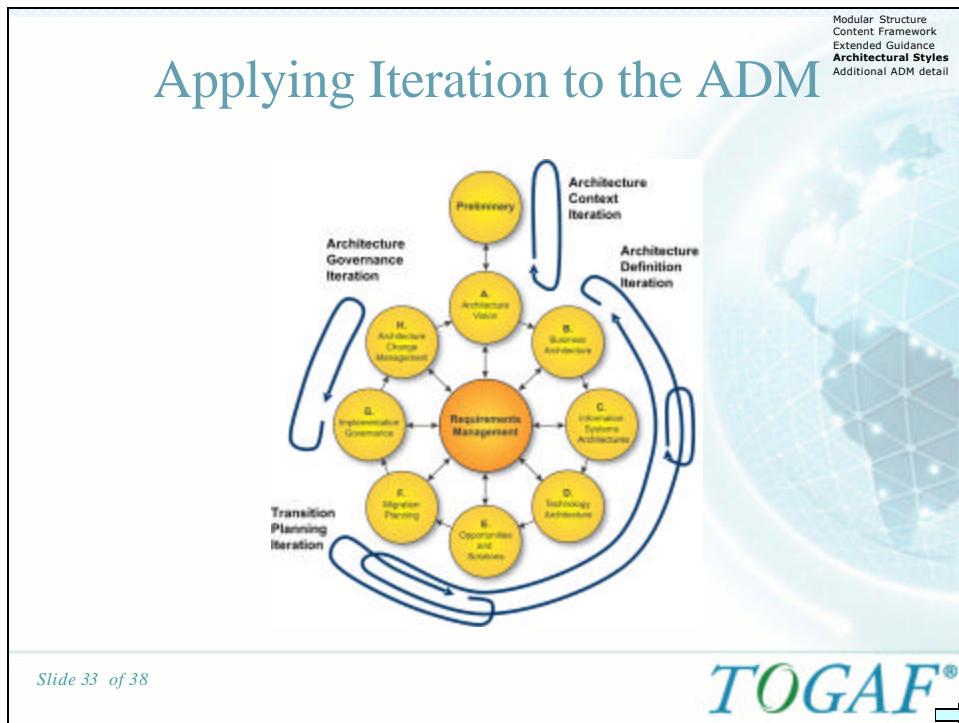
Modular Structure
Content Framework
Extended Guidance
Architectural Styles
Additional ADM detail

Explicit Consideration of Architectural Style

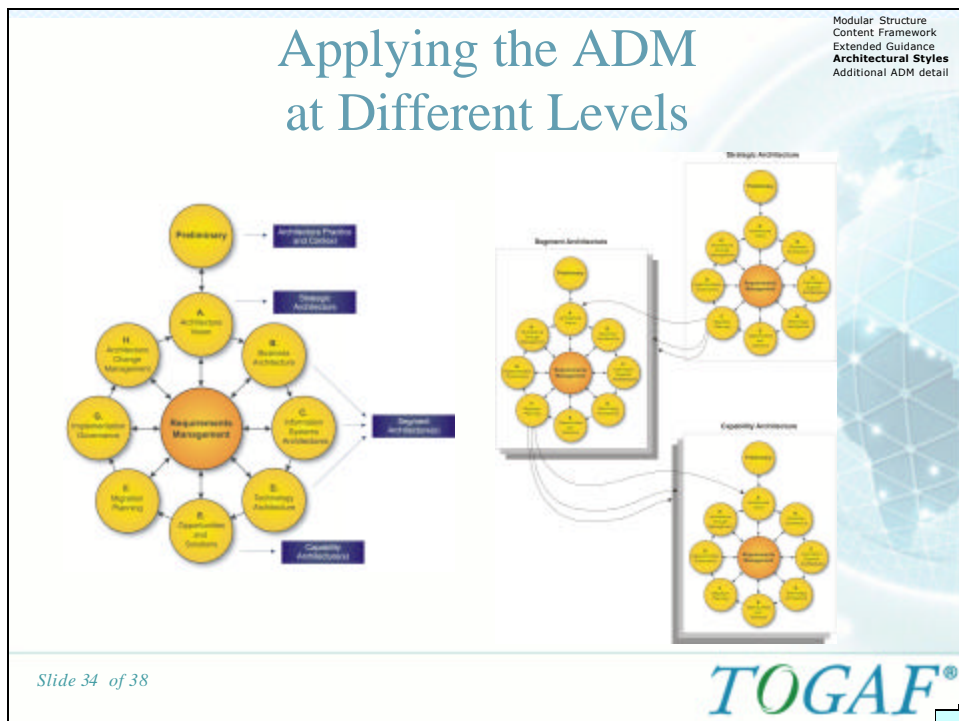
- The new Part III: ADM Guidelines and Techniques provides guidance on how to apply the ADM in specific situations
 - Applying Iteration to the ADM
 - Applying the ADM at different Enterprise Levels
 - Security Architecture and the ADM
 - Using TOGAF to define and govern SOA

Slide 32 of 38

TOGAF®



© 2009-2011 The Open Group, All Rights Reserved



Modular Structure
Content Framework
Extended Guidance
Architectural Styles
Additional ADM detail

Additional ADM Detail

- The Preliminary Phase features extended guidance on establishing the Enterprise Architecture framework
- Phase E and F feature a more detailed and robust method for defining and planning enterprise transformation based on the principles of capability planning

Slide 35 of 38

TOGAF®

© 2009-2011 The Open Group, All Rights Reserved

Modular Structure
Content Framework
Extended Guidance
Architectural Styles
Additional ADM detail

Additional ADM Detail

- Across the ADM, changes have been made to ensure that appropriate consideration is given to the Business, Information Systems and Technology aspects of change (and not just Technology)
- More guidance has been added to align TOGAF with related management frameworks, such as ITIL

Slide 36 of 38

TOGAF®

Summary

- TOGAF 9 is an evolution
- TOGAF 9
 - Builds a rich foundation for business execution
 - Enables business solutions from solidly defined architectural capabilities
 - Unites the business objectives with the IT capabilities, creating a platform for significant added value.

Slide 37 of 38

TOGAF®

© 2009-2011 The Open Group, All Rights Reserved

